

***Plant Growth
Hormone Technology***

BENEFITS

- **Promotes root and shoot growth**
- **Improves early season plant vigor**
- **Reduces early season stress**
- **Improves overall plant health**

Capitalize on a Proven Formulation of Plant Growth Hormones

RADIATE® is a unique blend of 3-indolebutyric acid (IBA) and kinetin, two plant growth hormones that work together to stimulate fast, early nodal root development and shoot growth.

By delivering these essential plant hormones in the optimum ratio, **RADIATE** drives maximum root growth, improves plant vigor and reduces plant stress during the critical vegetative growth stages. This proprietary formulation aids in reducing transplant shock and promoting plant growth and health.

RADIATE is a early season foliar application product that can be co-applied with most herbicides across crops at the three- to six-leaf stage.



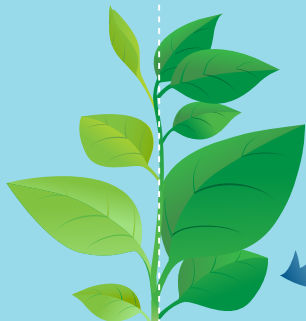
How It Works

Without RADIATE:

- ✓ Less vigorous plant
- ✓ Fewer root hairs
- ✓ Plant vulnerable to stunting or damage from variety of stresses

With RADIATE:

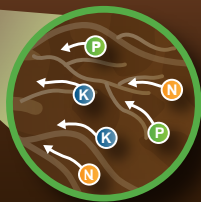
- ✓ Increased ability to produce auxin and cytokinins
- ✓ Enhanced root development, including more lateral roots and root hairs
- ✓ Greater early season plant vigor
- ✓ Reduced plant stress



Foliar application at
3- to 6-leaf stage of growth

Plant hormones IBA and kinetin stimulate plant and root growth, also increasing the plant's ability to make more of these essential hormones

Fewer nutrients taken up into plant

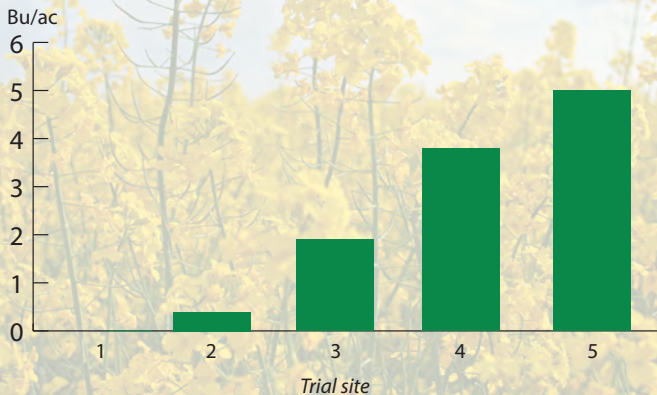


Healthy, more developed root system increases nutrient and water uptake

Canola - 5 Foliar Trials

RADIATE applied at 60 mL/acre with glyphosate (1 REL/acre) 4 LF
Trials conducted across Saskatchewan and Manitoba

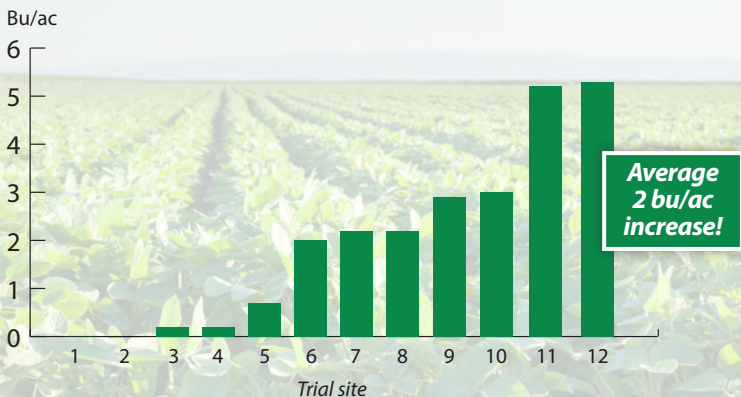
Yield Increase vs. Glyphosate Only



Soybeans - 12 Field-Scale Foliar Trials

RADIATE applied at 60mL/acre with glyphosate
Trials conducted across Manitoba

Yield Increase vs. Glyphosate Only





Application Information

Crop	Timing	Recom. Rate
Alfalfa, Clover & Hay	Seedling: Apply at 2-4 trifoliolate stage Established crop: Apply at 50% green up	60 mL/acre
Canola & Cereals	At 3-6 leaf stage	60 mL/acre
Corn	At 2-6 leaf stage	60 mL/acre
Pulses (Field Peas, Lentils, Dry Beans, Roundup Ready® Soybeans)	At 2-5 trifoliolate stage	60 mL/acre
Potatoes	1st application: At 2-4 true leaf stage 2nd application: 10-14 days after first application	60 mL + 60 mL/acre

Roundup Ready is a registered trademark of Monsanto Technology LLC.

Tank Mix Instructions

GLYPHOSATE ONLY

1. After the spray tank is mixed with other chemicals and water, adjust the pH to neutral or slightly acidic by adding **LI 700 at 0.125%- 0.25% v/v**.
2. **RADIATE** should be added to tank last.
3. If rainfall sufficient to wash off product occurs within 2 hours of application, re-treatment is required.

NON-GLYPHOSATE TANK MIXES

1. **RADIATE** should be added to tank last.
2. Spray **RADIATE** within 2 hours of mixing.
3. If rainfall sufficient to wash off product occurs within 2 hours of application, re-treatment is required.

Contact Your Local Loveland Products Retail Distributor

Loveland Products Canada, Inc.

789 Donnybrook Drive
Dorchester, Ontario N0L 1G5

Product inquiries:
www.lovelandproducts.ca



Radiate® and LI 700® are registered trademarks of Loveland Products, Inc.